

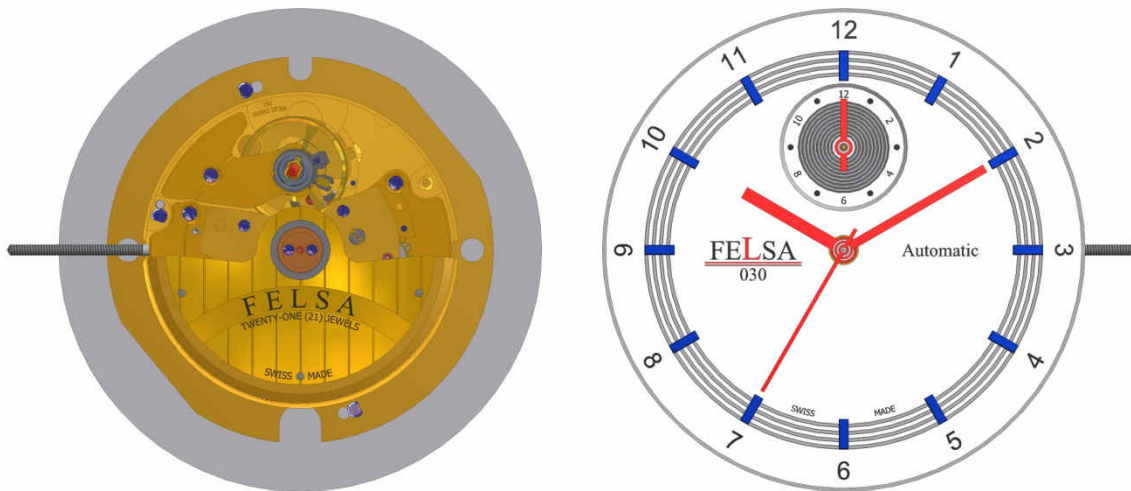
FELSA

SWISS S.A.

Fabrique d'Ebauches Leschot S.A.

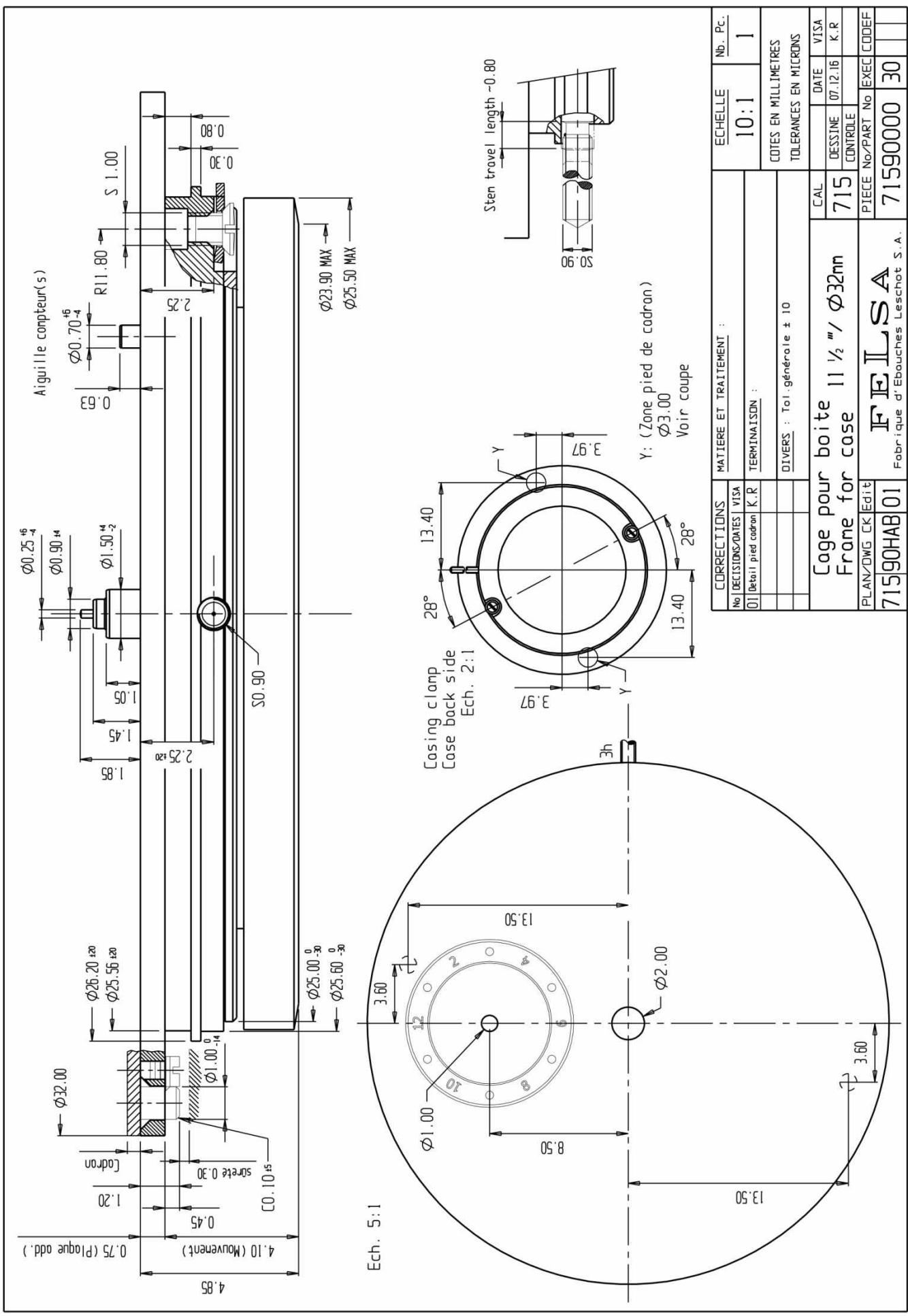
CAL. 715.030 AUTOMATIC, TWO TIME ZONE 21 JEWELS – SWISS MADE

Lever movement, sweep second with self-winding mechanism, jewel bearing,
two time zone indicator, frequency 4 Hz
(28'800 A/h 'vibrations per hour').



TECHNICAL SPECIFICATIONS

1. Outside Diameter	: 32.00 mm
2. Casing Diameter	: 25.60 mm
3. Stem height / Thickness)	: 2.25 mm / 4.85 mm
4. Frequency	: 4Hz; 28'800 beats per hour
5. Power Reserver	: mini. 42 hours
6. Accuracy	: -5 /+20 sec per day
7. Jewels	: 21
8. Shock absorbing devices	: 2
9. Amplitude	: T24 mini. 200°
10. Winding / Settings 2 positions	: 1) winding; 2) time setting



Aiguille compteur(s)

Ø0.25^{±0.05}

Ø0.90^{±0.04}

Ø1.50^{±0.02}

Ø26.20^{±0.120}

Ø25.56^{±0.120}

Ø25.00^{±0.030}

Ø25.60^{±0.030}

4.85

4.10 (Mouvement)

0.75 (Plaque add.)

0.45

1.20

1.85

1.45

1.05

2.25

50.90

Ø23.90 MAX

Ø25.50 MAX

R11.80

R0.80

0.30

S 1.00

2.25

Ø0.70^{±0.06}

0.60

0.80

0.30

CO.10

sûreté 0.30

Cadron

Sten travel length ~0.80

Ech. 5:1

Casing clamp
Casse back side
Ech. 2:1

Y: (Zone pied de cadron)
Ø3.00
Voir coupe

CORRECTIONS		Matière et traitement :		Echelle		Nb. P.c.	
No	DECISIONS/DATE	VISA		10:1		1	
01	(batail pied cadron)	K.R.		COTES EN MILLIMETRES			
TERMINAISON :				TOLERANCES EN MICRONS			
DIVERS : Toi.générale ± 10				CAL	DATE	VISA	
Cage pour boite				715	07.12.16	K.R.	
Frame for case				715			
PLAN/DWG	CK	Edité		PIECE	No/PART	No	EXEC
71590HAB	01			71590000		30	
F E I L S A				FABRIQUE D'ÉBOUCHÉS LESCHOT S.A.			